

The Tapestry Program of Rutland County
Providing Afterschool & Academy for K – 6th Grade
MOVE = Motivational Opportunities Vocational Exploration for 7th & 8th Graders

The Tapestry Program seeks to “Keep the Lights On” in the public schools of Rutland City, Rutland Town, West Rutland and Proctor beyond traditional school hours and in the summer.

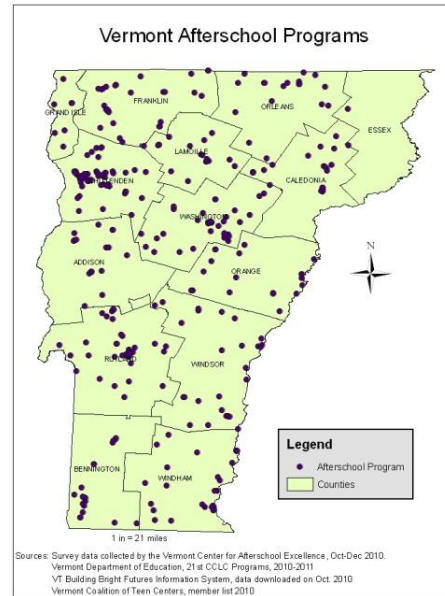
The Program shall provide expanded learning opportunities, as well as multiple cultural and enrichment experiences in a safe drug free, supervised environment within a climate of mutual respect and dignity for all our children K-8th.

Tapestry will weave together a multitude of community resources that will support the needs of families.

Adopted October 2000

Program highlights . . .

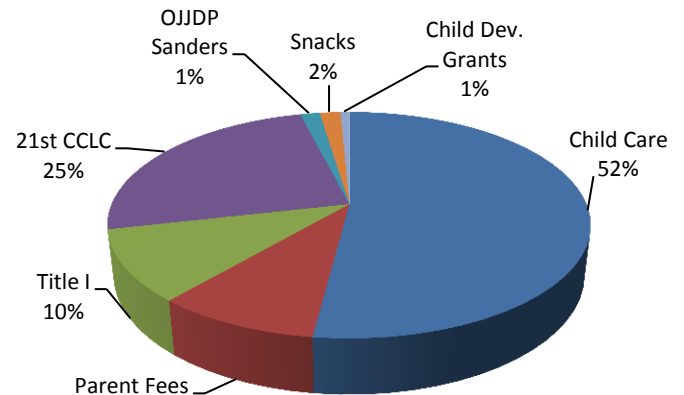
- Number of children and youth served over the full year was 911, without counting a child twice
 - Summer 596 and School year 441 served
- 6 to 8 week Summer
 - Academy – small group tutoring
 - Full day camps
 - MOVE camps week-long theme based
 - Stafford Technical Center experiences
- Afterschool
 - Academy – small group tutoring
 - Licensed school age care
 - Homework Clubs
- Common themes for expanded learning activities: literacy, drama, health & wellness, community service, natural environment studies, adventure based experiences, Lego construction, exposure to life-long skills through lessons, recreation and lots of cooking.
- Positive outcomes seen from a program that serves 80% or more of the free/reduced lunch qualified children:
 - Academic maintenance for all children over the summer
 - Gains in NECAP scores
 - Homework completion all school year
 - Having experiences equal to their peers, priceless
- Community partnerships supporting program
 - Rutland Recreation
 - Rutland Mental Health
 - Girl Scouts of the Green Mountains
 - Department of Children and Families
 - Vermont Achievement Center’s Mitchell Therapy Pool
 - Green Mountain Adventure Based Tours and Climbing Center
 - Stewart’s Shoppe
 - Vermont Department of Forest. Parks & Recreation



Tapestry’s seven sites are part of the 300+ afterschool programs across the state.

Our funding . . .

The program has been sustained over 12 years by diversifying with stable funding sources and securing small grants. The budget total is \$1,078,904 for fiscal year 2012. The total school population is over 2,000 children in K – 8th grade. Therefore the program is only serving 40% of the children. Given the fact that six of the seven schools have free/reduced rates from 50.4 to 78.54%, there is a need to serve more children.



Tapestry Program's Funding



Vermont Center for Afterschool Excellence
www.vermontafterschool.org

Tapestry Program
6 Church Street
Rutland, Vermont 05701
802-786-1935